

Dive in for realm of exotic woody finishes from Verdant

Gaudy and flashy interiors are passe, nowadays we are turning to a more natural and minimalistic look. Keeping this trend in mind, we offering an exclusive range: Verdant

Verdant has been carefully designed for every genre, be it traditional, Verdant has perfected the art of designer laminates with inspiration drawn from the book of nature.

Every design is a homage to nature's brilliance and is an amalgamation of superb design and craftsmanship.





T50 7600



FULL SHEET VIEW



01

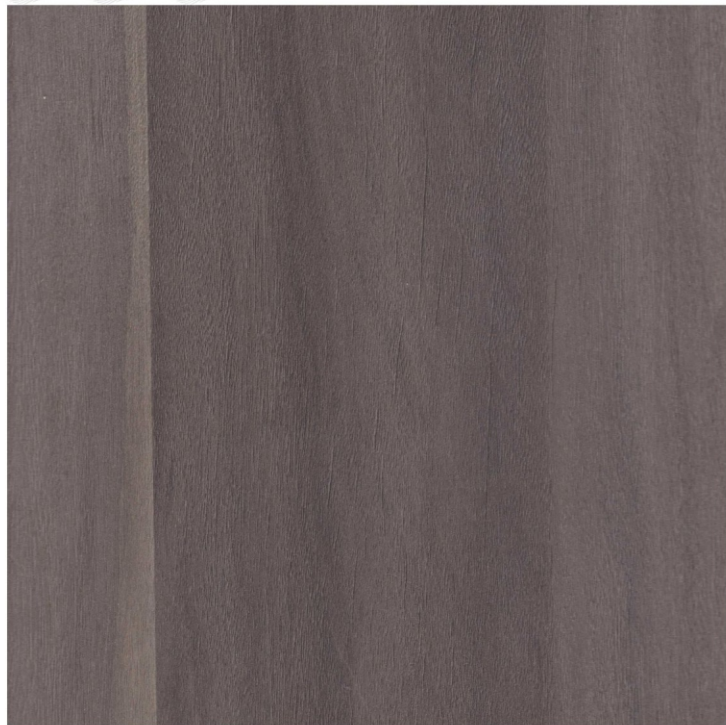
T50 7603

T50 7609

T50 7603 Design Layout 8 X 4 FT

T50 7609 Design Layout 8 X 4 FT

02



03

T51 7619



T51 7621

04





FULL SHEET VIEW



05

T50 7652

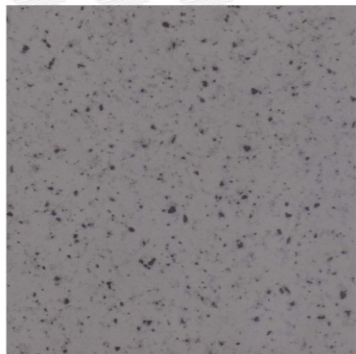
T50 7633

T50 7652 Design Layout 8 X 4 FT

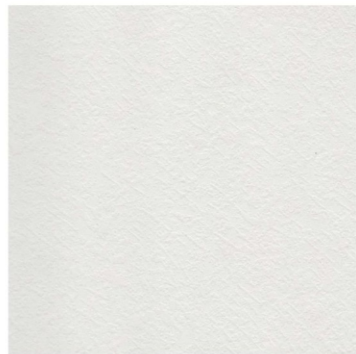
T50 7633 Design Layout 8 X 4 FT

06





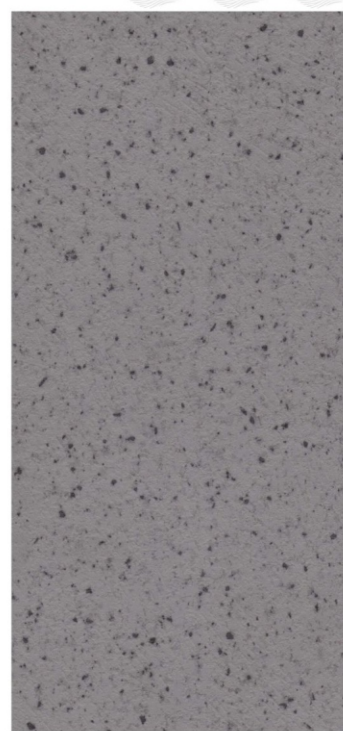
T53 7639



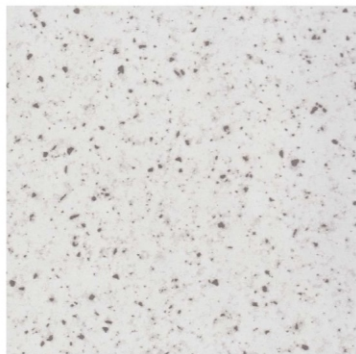
T49 7004



T49 7165



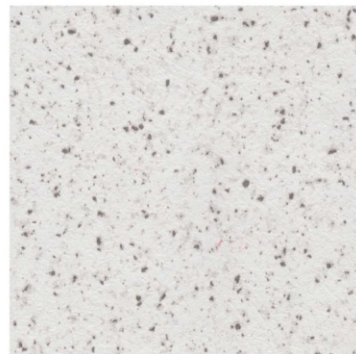
T49 7639



T53 7640



T49 7060



T49 7640



T44 7620



FULL SHEET VIEW



09

T44 7618

T44 7622

T44 7618 Design Layout 8 X 4 FT

T44 7622 Design Layout 8 X 4 FT

10



SF 7624



SF 7626



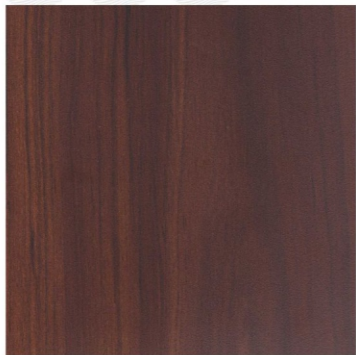
SF 7626 Design Layout 8 X 4 FT



T51 7629



T51 7623



SF 7624



SF 7625



SF 7630 Design Layout 8 X 4 FT



T51 7630



T51 7629



T51 7623



VERDANT
LAMINATES

FULL SHEET VIEW



VERDANT
LAMINATES



13

T50 7648

T50 7650

T50 7648 Design Layout 8 X 4 FT

T50 7650 Design Layout 8 X 4 FT

14



T50 7649



T44 7616



T44 7615



T44 7616 Design Layout 8 X 4 FT



T44 7615 Design Layout 8 X 4 FT



T50 7612

T50 7614



T50 7612



T50 7614



FULL SHEET VIEW



T33 7601



T33 7602



T33 7602 Design Layout 8 X 4 FT



7004



18



FULL SHEET VIEW



17

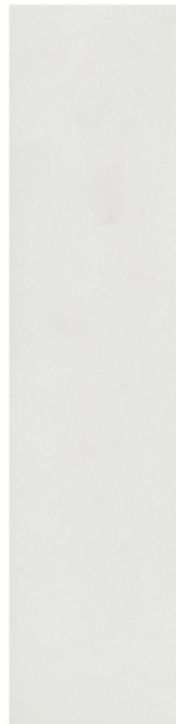
T33 7601



T47 7653 Design Layout 8 X 4 FT



T47 7653



T53 7004



18



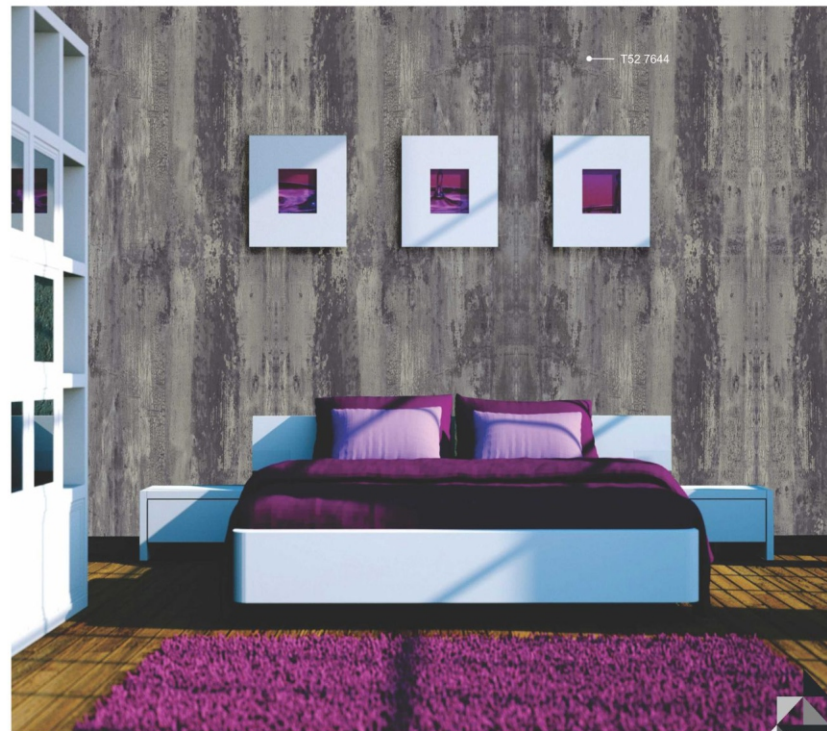
FULL SHEET VIEW



T52 7643



T52 7643 Design Layout 8 X 4 FT



T52 7644



T52 7643



T52 7644



T52 7644 Design Layout 8 X 4 FT





T52 7004



T52 7607



T52 7165



T52 7605



23

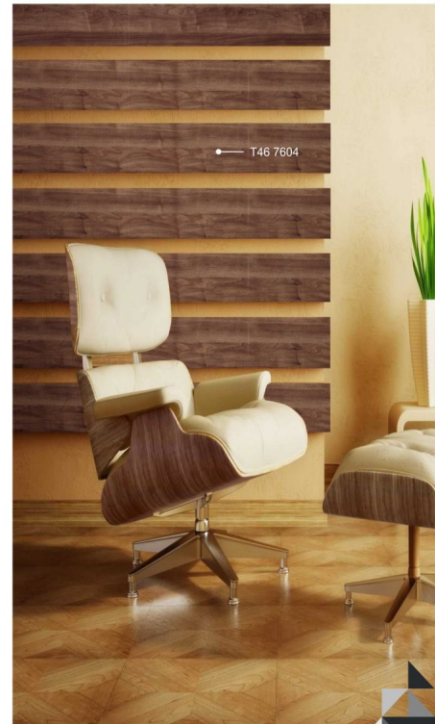
T46 7613



T46 7611



T46 7604



24



FULL SHEET VIEW





T51 7627

T51 7628



T51 7627



T51 7628



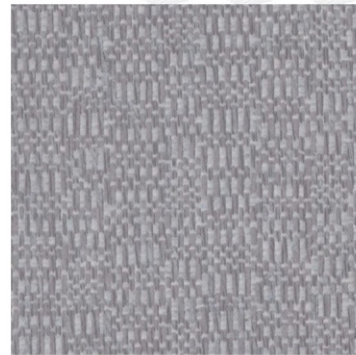
T54 7635



T54 7634



T54 7637



T54 7636



T54 7638



SF 7436 (HZ)



SF 7445 (HZ)



SF 7651 (HZ)



SF 7612 (HZ)



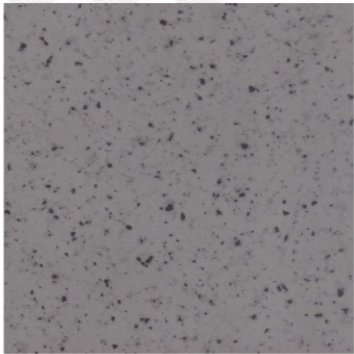
SF 7614 (HZ)



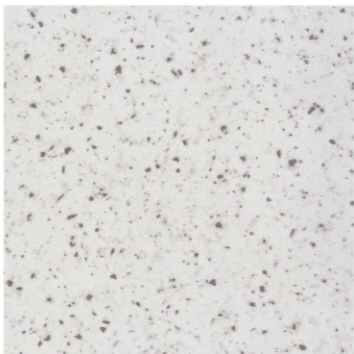
T53 7646



T53 7647



T5 7640 GL



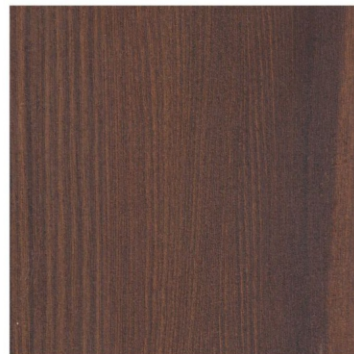
T5 7639 GL



T5 7653 GL



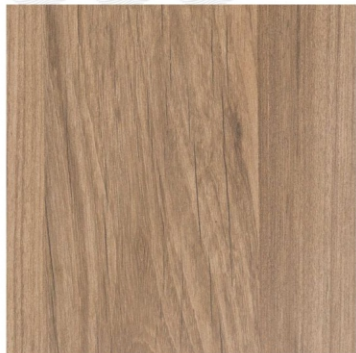
T5 7652 GL



T5 7633 GL



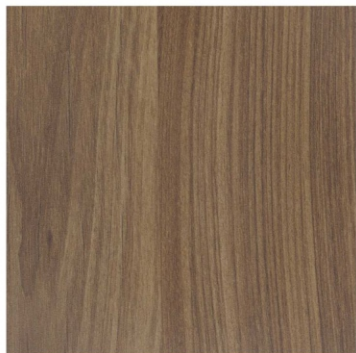
T5 7648 GL



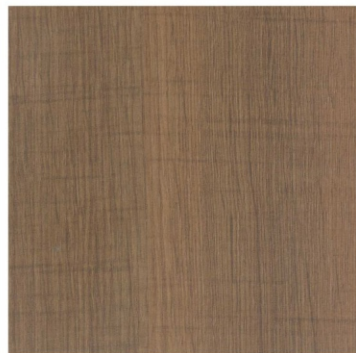
SF 7608



SF 7602



SF 7610



SF 7601



SF 7642



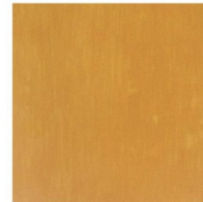
SF 7645



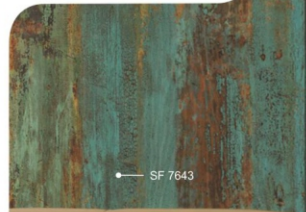
SF 7643



SF 7644



SF 7606



SF 7643



SF 7641





SOLID COLOUR

HIGH GLOSS



7165 SF



7001 SF



7060 SF



7119 SF



7004 SF



7005 SF



7040 SF



7077 SF



7088 SF



7041 SF



7063 SF



T5 7064 HG



T5 7088 HG



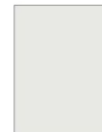
T5 7011 HG



T5 7082 HG



T5 7001 HG



T5 7004 HG



T5 7119 HG

No	Design Code	Page
T-33		
1	T-33 7601	17
2	T-33 7602	17
T-44		
1	T-44 7615	15
2	T-44 7616	15
3	T-44 7618	9
4	T-44 7620	10
5	T-44 7622	9
T-46		
1	T-46 7604	24
2	T-46 7611	23
3	T-46 7613	23
T-47		
1	T-47 7653	18
T-49		
1	T-49 7004	7
2	T-49 7060	7
3	T-49 7165	8
4	T-49 7639	8
5	T-49 7640	8
T-50		
1	T-50 7600	2
2	T-50 7603	1
3	T-50 7609	1
4	T-50 7612	16
5	T-50 7614	16
6	T-50 7633	5
7	T-50 7648	13
8	T-50 7649	14
9	T-50 7650	13
10	T-50 7652	5
T-51		
1	T-51 7619	3
2	T-51 7621	4
3	T-51 7623	12
4	T-51 7627	26
5	T-51 7628	26
6	T-51 7629	12
7	T-51 7630	12
8	T-51 7631	25
9	T-51 7632	25

No	Design Code	Page
T-52		
1	T-52 7004	22
2	T-52 7605	22
3	T-52 7607	22
4	T-52 7643	19
5	T-52 7644	19
6	T-52 7165	22
T-53		
1	T-53 7004	18
2	T-53 7639	7
3	T-53 7640	7
4	T-53 7646	32
5	T-53 7647	32
6	T-53 7651	6
T-54		
1	T-54 7634	27
2	T-54 7635	27
3	T-54 7636	28
4	T-54 7637	28
5	T-54 7638	28
SF (HZ)		
1	SF 7612 (HZ)	30
2	SF 7614 (HZ)	30
3	SF 7436 (HZ)	29
4	SF 7445 (HZ)	29
5	SF 7651 (HZ)	30
TS HIGH GLOSS		
1	T-5 7633	34
2	T-5 7639	33
3	T-5 7640	33
4	T-5 7648	34
5	T-5 7652	34
6	T-5 7653	33
TS HIGH GLOSS COLOR		
1	T-5 7001 HG	38
2	T-5 7004 HG	38
3	T-5 7011 HG	38
4	T-5 7064 HG	38
5	T-5 7082 HG	38
6	T-5 7088 HG	38
7	T-5 7119 HG	38

No	Design Code	Page
SF		
1	SF 7601	35
2	SF 7602	35
3	SF 7606	36
4	SF 7608	35
5	SF 7610	35
6	SF 7624	11
7	SF 7625	11
8	SF 7626	11
9	SF 7641	36
10	SF 7642	36
11	SF 7643	36
12	SF 7644	36
13	SF 7645	36
SOLID COLOUR		
1	7001	37
2	7004	37
3	7005	37
4	7040	37
5	7041	37
6	7060	37
7	7063	37
8	7077	37
9	7088	37
10	7119	37
11	7165	37



Do not use chemicals for cleaning

Avoid direct sunlight / continuous light. These may cause colour fading.

Extra care required in vertical pasting of laminates sheet as there is possibility of bubbles due to lack of uniform pressure

Cracking at corners and around cuts may be caused by improper conditioning, improper bonding, poor planning. Avoid all these to prevent cracking at corners.

This is for sample purpose only. Not for sale.

Finish Gloss, Matt, Suede, Texture

Thickness 0.8 mm

Size 2440 X 1220 mm

Maintenance Metallic Colours one only recommended for vertical use. Avoid direct sunlight clean with mild soap solution. No abrasive cleaners to be used

Warranty Siddhi Decor Pvt. Ltd. warrants that all its products are free from manufacturing defects and perfect for use under normal condition. The products should be inspected prior to installation. For non-conforming material the company is liable for the cost of the product only.

Note Sample shown represent the colours, desing and finish and do not represent the thickness



ISI Standard for Decorative / Laminates

Test	ISI Reqd. Value	Indomica Value
Staining	Group 1 & 2 = 5 Group 3, 4 & 4 = 4	5 5
Boiling Water	10%	<10%
Cracking	Hairline Crack	No visible change
Surface Wear	Initial point > 150 Initial point > 350	>175 >375
Steam	4	5
Scratch Resistance	Min 204 gm	> Min 204 gsm
Impact (Small Ball)	20 N	>200 N
Cigarette Burn	3	Min 4
Dry Heat Test	3	Min 3
Dimensional Stability	MD = Max. 0.380%, CD = Max. 0.6 %	Max = 0.03% Max = 0.55%

MD = Machine Direction
CD = Cross Direction

NEMA (American Standard for Decorative / Laminates)

Description of Test	General Purpose from Nema	General Purpose from Indomica	Post Forming 0.7mm Nema	Post Forming 0.7mm Indomica
	Reqd. Value	Reqd. Value	Reqd. Value	Reqd. Value
Thickness Tolerance (Max)	(+/-) 0.127	(+/-) 0.05	(+/-) 0.127	(+/-) 0.05
Wear Resistance (Min)	400	>500	400	400
Scuff Resistance (Min)	No Effect	No Effect	No Effect	No Effect
Ball Impact Resistance (Min) (using large ball)	669 mm	>669 mm	20 mm	>20 mm
Dimensional Change (M.D.) (Max)	0.6%	0.55%	1.1%	1.0%
Dimensional Change (C.D.) (Max)	1.0%	0.9%	1.4%	1.3%
Boiling Water Resistance (Min)	No Effect	No Effect	Slight Effect	Slight Effect
High Temperature Resistance (Min)	Slight Effect	Slight Effect	Slight Effect	Slight Effect
Radiant Heat Resistance (Min)	100	105	80	90
Conductive Heat Resistance (Min)	No Effect	No Effect	No Effect	No Effect
Stain Resistance (Min)	No Effect	No Effect	No Effect	No Effect
Light Resistance (Min)	Slight Effect	Slight Effect	Slight Effect	Slight Effect
Cleanability Cycles (Max)	25	24	25	24
Formability (Min)	-	-	12.70mm	12.00mm
Bister Resistance (Sec)	-	-	40	40

All tests are not valid for metal bond desings